



# ANNUAL HOUSING REPORT

2021

2022



## PREPARED BY

Fran Hunt-Jinnouchi, Executive Director

Dr. Filip Metro Ani, Community Relations & Research Manager

Julia O'Quinn, Equity Programs & Youth Research Manager



# TABLE OF CONTENTS

<i>Forward</i>	P 03
<i>Board of Directors</i>	P 04
<i>Approach to Care</i>	P 05
<i>Major Updates</i>	P 06
<i>Housing Snapshot</i>	P 07
<i>Culturally Supportive House</i>	P 08
<i>Indigenous Alcohol Harm Reduction Residence Program</i>	P 09
<i>Speqəŋéutxw House</i>	P 10
<i>Independent Housing</i>	P 12
<i>Family Reunification Program</i>	P 14
<i>House of Courage</i>	P 15
<i>Acknowledgements</i>	P 16





## FORWARD

The past year was a challenging one but filled with many milestones — none more significant than learning the Aboriginal Coalition to End Homelessness (ACEH) Society received the green light for a 45-unit Culturally Supportive Housing site in Victoria West. The impacts of the pandemic are still felt by staff and the Indigenous Street Family who we serve but we have come out on the other side even stronger.

Lessons learned through our research including one-on-one surveys, story sharing, and focus groups, clearly support the impacts of our *Dual Model of Housing Care*. In particular land-based healing and the Indigenous Alcohol Harm Reduction program (IAHRP) are proving invaluable for Family Members on their healing journeys, among other decolonized harm reduction supports deeply rooted in cultural teachings and practice.

I'm very happy to present our 2nd Annual Housing Report which provides highlights specific to our

housing sites and services across the housing continuum — from supporting those who are living rough on the streets or tent encampments, to those we transition into our Culturally Supportive Housing and Westshore independent housing. We raise our hands to the ləkʷəŋən speaking peoples who are the keepers of the traditional territory where our current Culturally Supportive Housing sites are situated. I am personally thankful to be doing this work on your territories and to have your support.

I also want to remember and never forget the two young men that we lost last year. May it continue to be a reminder of why we do this work and the critical need for our people to have a place to call home, a community of people who care about them, and supports for healing and recovery when, and if they are ready. With this I extend utmost respect and thanks to my team which has grown from 2 employees in 2016 to over 80 today in 2022.



**Fran Hunt-Jinnouchi, Executive Director**

# BOARD OF DIRECTORS

NAME	POSITION	REPRESENTING
<i>Chief John Powell</i>	Chair	Mamalilikulla First Nation
<i>Donald Kattler</i>	Vice-Chair	Mental Health Recovery Partners, North Island
<i>Charlayne Thornton-Joe</i>	Secretary	City of Victoria
<i>Gordon Gunn</i>	Treasurer	Non-Affiliated
<i>Guy Louie</i>	Board Member	Nuu-Chah-Nulth Tribal Council
<i>Julie Spiteri</i>	Board Member	Métis Nation of Greater Victoria
<i>Sandra Richardson</i>	Board Member	Greater Victoria Coalition to End Homelessness Society
<i>Ruth Young</i>	Board Member	University of Victoria







# APPROACH TO CARE

## PATHWAYS TO HOUSING & HEALING

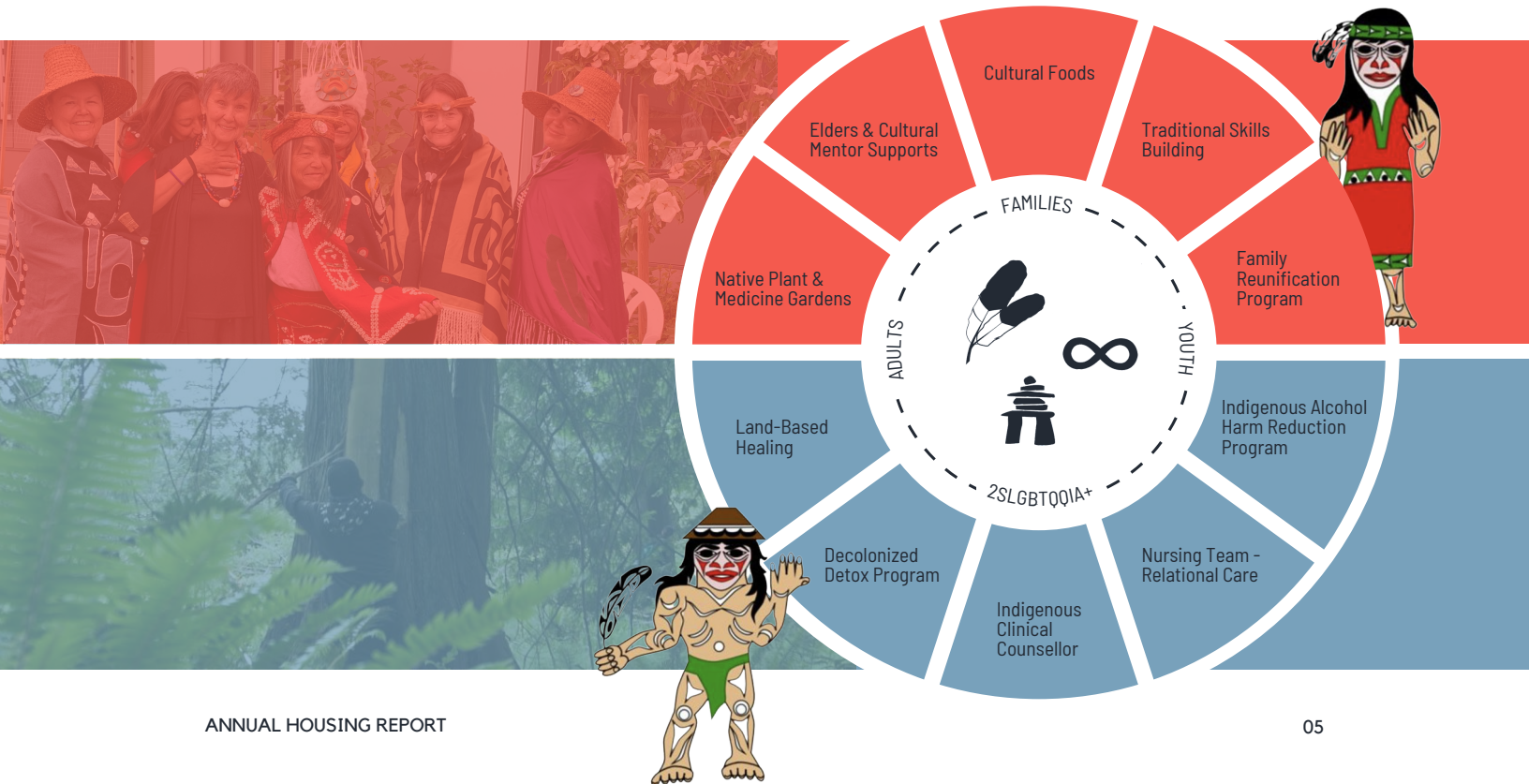
The Aboriginal Coalition provides support to the Indigenous Street Family across the housing continuum, facilitating positive flow.



## DUAL MODEL OF HOUSING CARE

The ACEH developed British Columbia's first Culturally Supportive Housing which operate according to its *Dual Model of Housing Care*. This approach goes beyond housing provision to provide pathways to healing from intergenerational harms rooted in colonial trauma. On-site Family Members (residents) have access to Elder support, medicine keepers, cultural mentors, native medicine gardens,

traditional foods and cultural programming. To support wellness, Family Members have access to land-based healing and the Indigenous Alcohol Harm Reduction Residence program, with an at-home detox set to launch in 2022. Together the dual parts of the model strengthen identity, build community, (re)connect families, support healing, and lead to transformation for those previously unhoused.



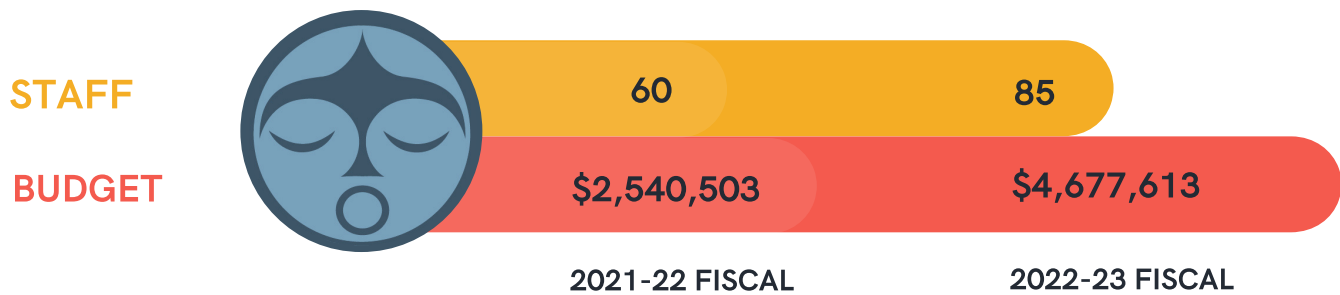
# MAJOR UPDATES

## DIRECTOR OF HOUSING

The ACEH is pleased to welcome Wade Hunt into the position of Housing Director. Wade brings a wealth of experience working with members of the unhoused First Nations, Métis, and Inuit (FNMI) community from his previous role as House Manager of the Culturally Supportive House (CSH). Wade will be supervising house managers, harmonizing nursing services, and coordinating the housing units at CSH and Speqəᑎéútxw House. Additionally, Wade will be a presence at meetings with the larger community and interface with BC Housing to ensure that ACEH Family Members get the support required.



## ORGANIZATIONAL GROWTH



## STAFFING

Capacity to support the Indigenous Street Family builds through implementation of the following hiring policies:

*Pursuant to S.41 of the BC Human Rights Code, preference is given to First Nations, Métis and Inuit applicants when equally qualified.*

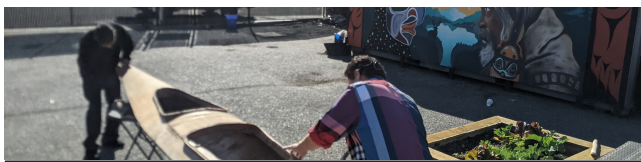
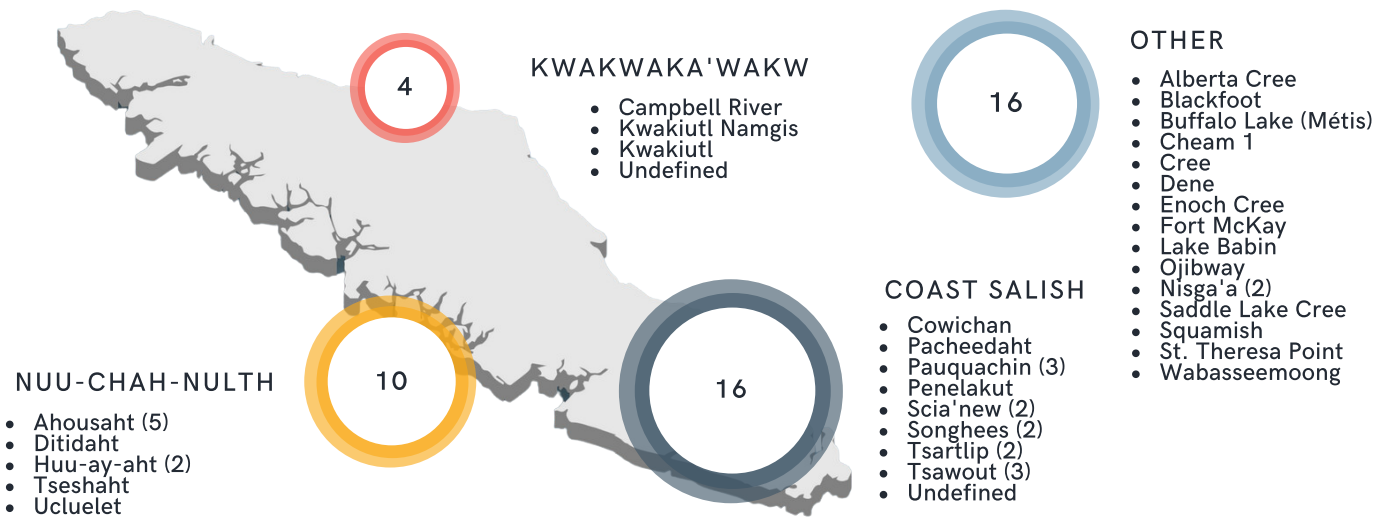
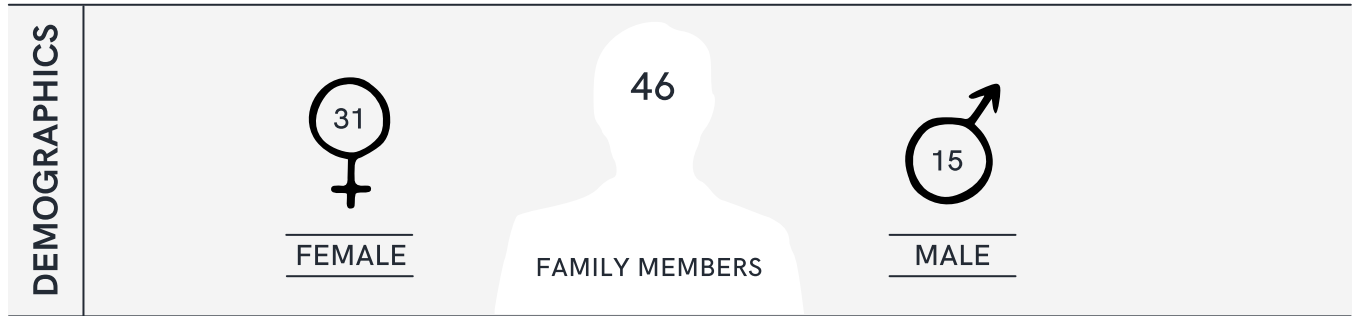
*The ACEH values strength in diversity. As an inclusive employer that celebrates the gifts of its staff, we encourage 2SLGBTQIA+ people to apply.*

**53%** of staff have First Nations, Métis and/or Inuit ancestry





# HOUSING SNAPSHOT



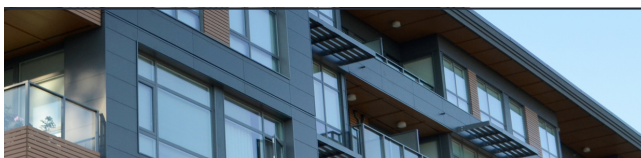
## CULTURALLY SUPPORTIVE HOUSE

21 STAFF | ACCOMMODATING 11



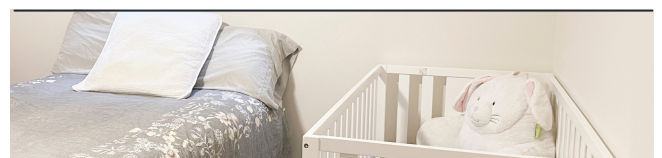
## SPEQ̓ƏṆÉUTXW HOUSE

26 STAFF | 21 UNITS, ACCOMMODATING 22



## INDEPENDENT LIVING

1 STAFF | 13 SUPPORTED



## FAMILY TOWNHOUSE

1 STAFF | 3 BD FOR FAMILY REUNIFICATION

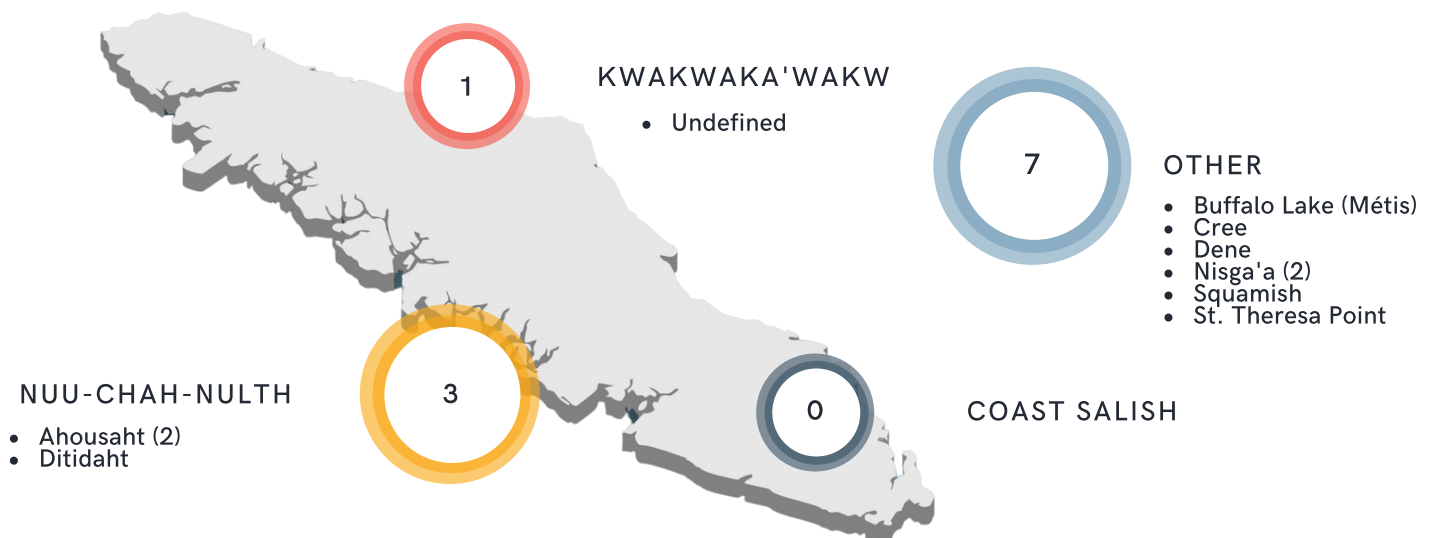
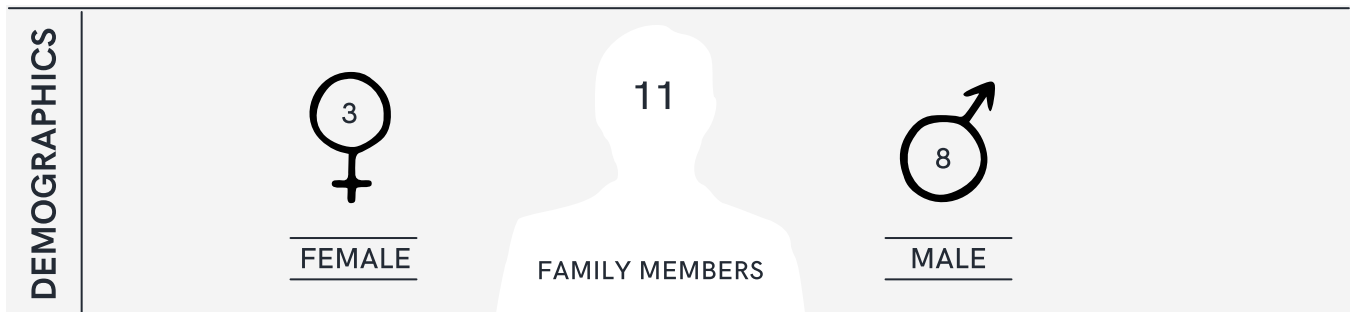


## CULTURALLY SUPPORTIVE HOUSE

21 STAFF | ACCOMMODATING 11

The Culturally Supportive House continues to provide culturally responsive services in Victoria's downtown core to FNMI Family Members, including the Indigenized Alcohol Harm Reduction Program (IAHRP). This year, CSH has benefitted from more frequent opportunities for

cultural mentorship in the form of a consistent Elder presence. Cultural activities such as, deer processing, brushing ceremonies, and drumming were also notable highlights for the year. Finally, the ACEH welcomes Judy Peterson as CSH's new House Manager, replacing Wade Hunt.







MURAL BY BEAU DICK

## INDIGENOUS ALCOHOL HARM REDUCTION RESIDENCE PROGRAM

The Indigenous Alcohol Harm Reduction Residence Program (IAHRP) is available for Family Members residing at the Culturally Supportive House. It is being designed, developed and evaluated over a 3-year period with support from Dr. Bernie Pauly and Meaghan Brown at the University of Victoria's Canadian Institute for Substance Use Research.

The ACEH's Elders and Knowledge Keepers Advisory share their wisdom and guidance toward development of this culturally informed program. Knowledge exchange with partners at the University of Calgary, Alpha House, and the Aboriginal Standing Committee on Homelessness in Calgary is central to this program, toward strengthening IAHRP's in BC and Alberta.



Our thanks to the Canadian Institutes of Health Research (CIHR) for funding this 3-Year research project.



Additional thanks to Island Health for funding a Registered Nurse for on-site program support 7 days a week.



*"I didn't know who I was and I didn't have an identity, you know, so. It was helpful to be around First Nations... Elders and staff. [...] It made me feel, um, some pride. I guess to get out of my other part of my different masks that I wore on the street. [...] It was important to me I think, yeah, to find my voice."*

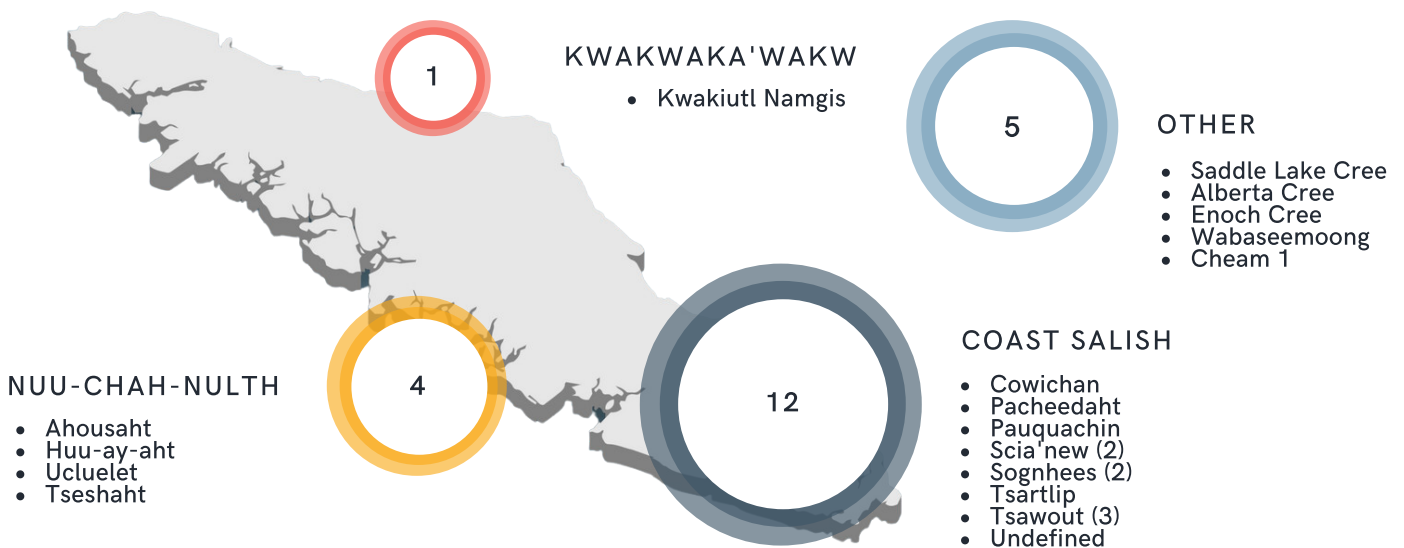
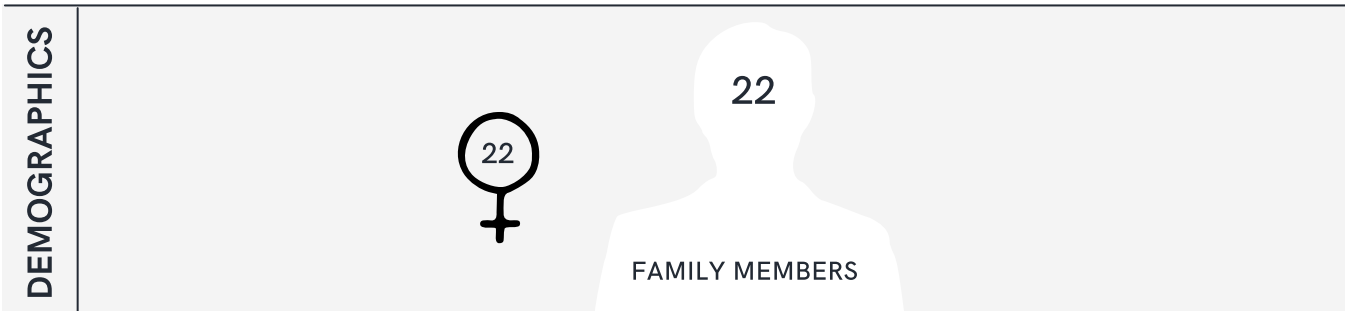


# SPEQƏŋÉUTXW HOUSE

26 STAFF | 21 UNITS, ACCOMMODATING 22

Speqəŋéutxw House continues to provide culturally responsive support to FNMI women through programs including therapeutic gardening, where native medicines, berry plants, and vegetables are grown annually. This ongoing opportunity to practice stewardship of the land has been very powerful. It has also provided an employment opportunity through the in-house work program, where the women are compensated for hours worked tending to the garden.

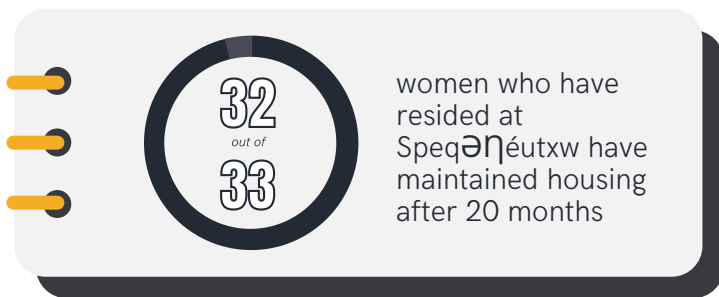
From the garden, production of ceremonial tobacco, whitebrush sage for smudge blends, and other medicine plants such as nettles, yarrow, and plantain have been used to make medicinal salves. The ACEH looks to expand its garden program to support the resiliency of Indigenous food and medicine security within the organization. Finally, the ACEH welcomes Nikki Wilkinson as Speqəŋéutxw's new House Manager, replacing Willa Harry.





MESSAGE TO THE EXECUTIVE DIRECTOR

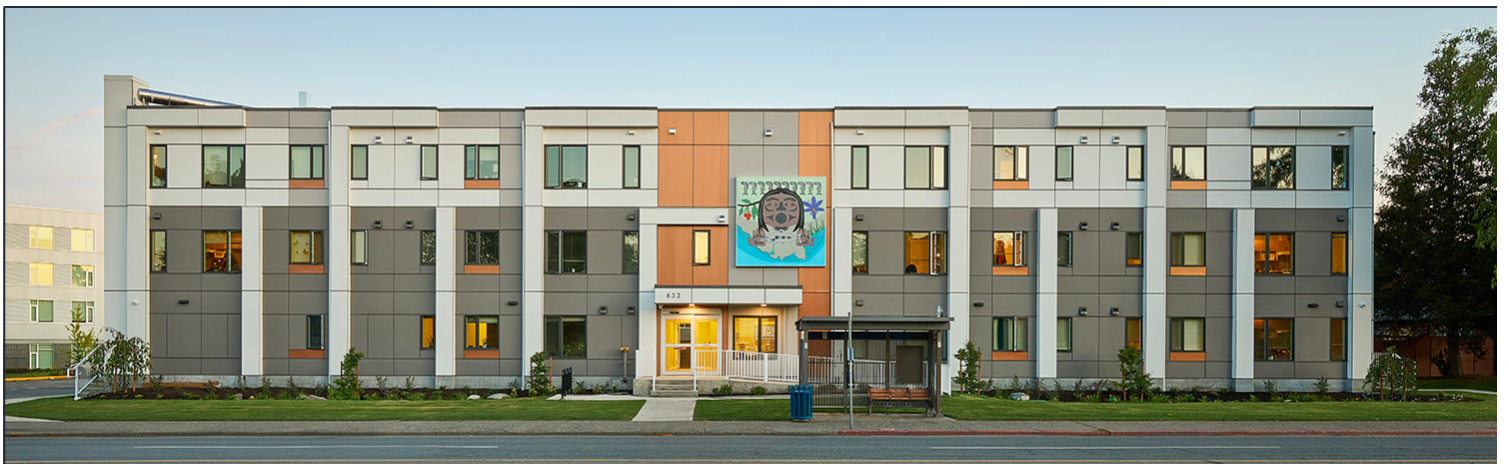
"I clearly remember the first time hearing you speak about Speqəŋéútxw... it was still 2 years away from opening at that time. Just as you always knew, and according to our data the Speqəŋéútxw model is very uniquely successful. While I realize that data is a small piece of the story, I want to share what I found..."



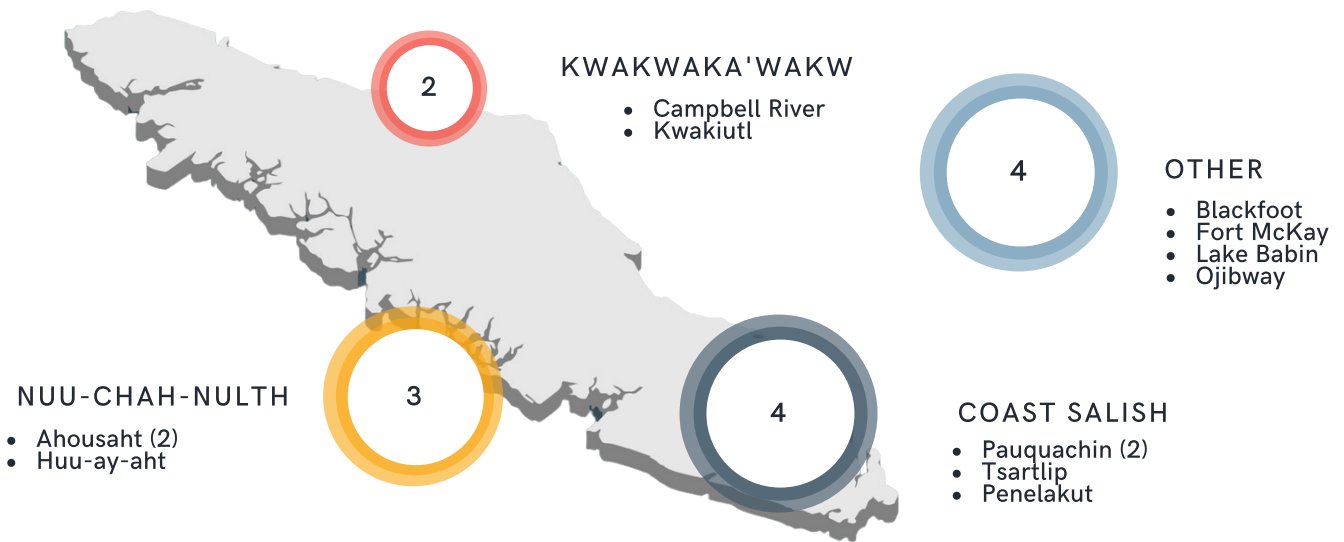
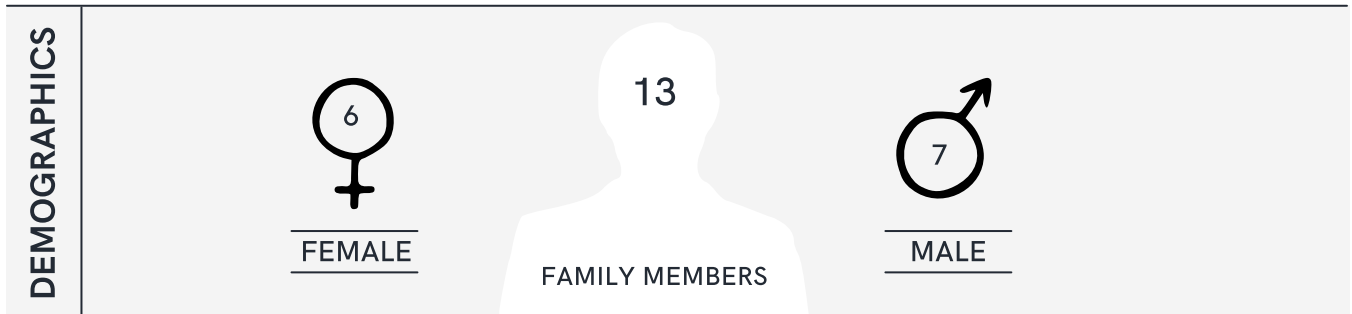
"I want you to know that this is very special and different from what we often see in larger supportive housing sites with different models of care."



LOIS GABITOUS  
Coordinated Access and  
Assessment Manager



# INDEPENDENT HOUSING



## TRANSITION STORIES



### LINDA BOUCHIER

moved into independent housing, soon after facing serious depression, as she felt isolated from her friends, resources, and the downtown core. After a few months of adjusting, Linda started to become herself again. She participated in many land-based healing camps, healing circles, and enrolled in the ACEH's Peer Training Program with perfect attendance. Linda is now happy to have a peaceful, quiet safe haven to call home.

### VALERIE HENRY

was living downtown in a small bedroom at the Mt. Tolmie hospital when she was selected to move into independent housing in the Westshore. Valerie seized the opportunity. She crafted a resume and began applying at various restaurants around Langford. She landed a full-time job working in a kitchen. She saved up some money, bought herself a vehicle so she could make sure she was able to get to and from work each day. Watching her blossom has been an inspiration!





# HOUSING TRANSITION SUPPORT



The Housing Transition Advocate (HTA) supports Family Members as they move forward in the housing continuum toward independent living. This transition can present personal challenges, including isolation, for those previously unhoused or living in Culturally Supportive Housing.

The dedicated, ongoing support of the HTA during these critical junctures helps Family Members remain on their pathways to healing and recovery. Over a 9-month period she engaged in a total of 693 communications to provide support in the following ways:



MENTAL HEALTH



WELLNESS ACTIVITY



SERVICE SUPPORT



SERVICE REFERRALS

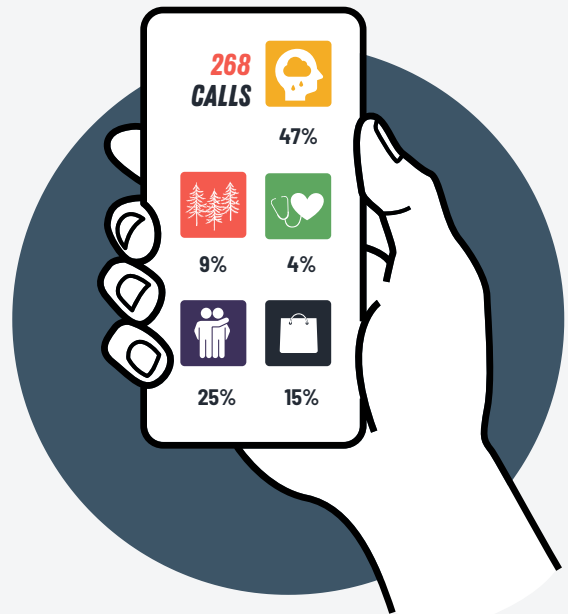


INFORMATION / ITEM DISTRIBUTION

## OUTGOING



## INCOMING



82%

CALLS ANSWERED

95%

# FAMILY REUNIFICATION PROGRAM

The Family Reunification Program (FRP) provides a safe, comfortable home environment for Indigenous Street Family members to visit with their children and grandchildren in Ministry care or staying with extended family. In addition to accessing the 3-bedroom townhouse, the following supports are provided by the program coordinator: service navigation, visitation supervision as needed, house maintenance, and safety preparedness.

Through the FRP, self-identity is strengthened, intergenerational familial connection is (re)built, and Indigenous Street Family members who otherwise would be unable to connect with their children are finding a deep, lasting purpose. In its first year of operation, access to the FRP has proven to have transformational impacts, leading to harm reduction among parents and extended visitations with their children over time.



## FEATURE STORY

Valma, her husband Darcy, and their 6 year old daughter Lydia, were supported by the the ACEH's Family Townhouse Program for 2 months. Today, we have successfully housed the Sampson family through Pacifica Housing into a cost effective home where their family can live, laugh, and support each other, without worry of being unhoused.

"When working with individuals impacted by the housing crisis, I've been incredibly grateful that ACEH has been able to step in and provide needed supports right away. The rate at which ACEH has grown shows just how vital they are to our community - as housing providers, as an advocacy organization, and in demonstrating what culturally safe and informed Indigenous housing can look like. In addition, their research and community-building informs so much of the work I do in Ottawa."



**LAUREL COLLINS**  
Member of Parliament for Victoria





# HOUSE OF COURAGE, OPENING FALL 2022



With support from BC Housing the ACEH will fulfill its plan to transfer Family Members living at the Culturally Supportive House to a new enhanced housing site in Victoria West. The naming of the house, House of Courage, occurred on October 18, 2021 during a gathering of local Elders who considered the character of ACEH Family Members embarking upon their journey toward healing and recovery. Elders chose this name to recognize their courage, resiliency, and bravery. Bradley Yuxwelupton Dick, who was present at the gathering of Elders, has been commissioned with developing the artwork for the new building, which will include local FNMI themes.

A blessing of the site occurred on July 29, 2021 in the presence of honoured witnesses. Joe Seward III and Joe Seward Jr. offered a welcome, as did Frank George on behalf of Songhees Nation. XULĆILUM (Fred Charlie) and TULXUMKEN (Roger Charlie) acknowledged and honoured FNMI ancestors through song and prayer. The ACEH's projected move in date is October 2022 and already local members of the community are demonstrating their support. The Market Garden, located across the street from the House of Courage, has reached out, and looks forward to welcoming their new neighbours into the community.



Based out of the House of Courage will be the city's first Indigenous-led detox program. It will be supported by the ACEH's Elders, cultural mentors, and nurses.



# ADDITIONAL ACKNOWLEDGEMENTS



The Aboriginal Coalition to End Homelessness Society would like to extend its thanks to BC Housing for funding staffing and operational costs; the First Nations Health Authority for funding land-based healing and a Registered Nurse; the City of Victoria for funding frontline outreach and wellness services; the Capital Regional District for funding housewares, supplies, and basic needs; the Rotary Club of Victoria for its \$10k donation to assist with furnishing the family townhouse; and the University of Victoria for a range of critical research support.

